

PRODUCT CATALOG



**Quality stability !
Customer first !**



**SOLID INSULATED
AUTOMATIC RECLOSER**

Introduction

ZFTU2000 Automatic circuit Reclosers are designed for use on overhead distribution lines and for distribution substation 15.5kV and 27kV

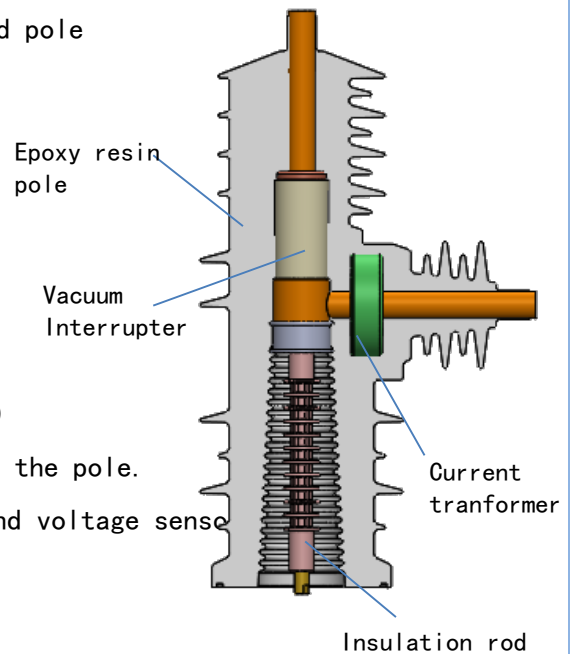
Reclosers are consisted of epoxy insulated pole, tank and control cabinet

Characteristic Key point

- ◇ Eco friendly-not used oil or SF₆ gas
- ◇ Incorporated vacuum interrupter inside solid pole
- ◇ maintenance low magnetic actuator
- ◇ Compact design
- ◇ Microprocess based on controller

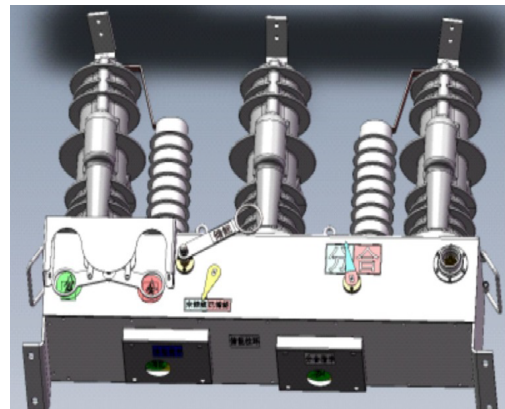
Solid insulated Pole

- ◇ High resistance by Ultraviolet (epoxy resin)
- ◇ The vacuum interrupters are encapsulated in the pole.
- ◇ Each pole contained a current transformer and voltage sense
- ◇ Removable pole
- ◇ Can be used high pollution area



Permanent Magnetic Actuator

- ◇ 10,000 times CloseOpen mechanical operation
- ◇ Fewer moving part and low maintenance
- ◇ Simple design
- ◇ Reliable indicator
- ◇ Fully holding force

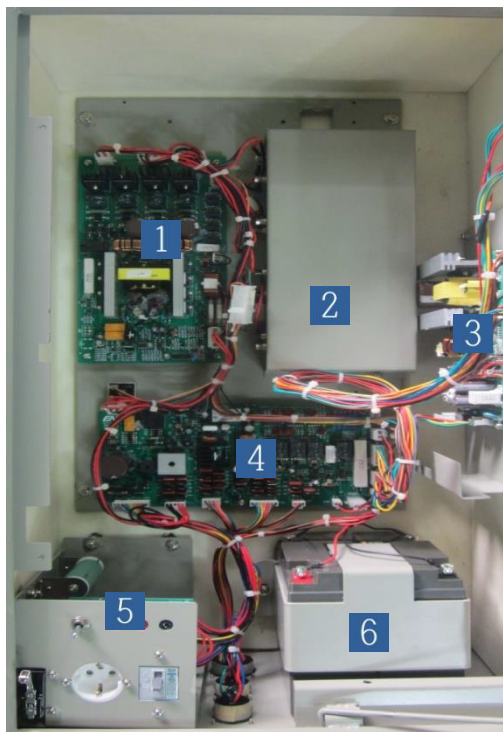


Enclosure

- ◎ Stainless steel enclosure to prevent corrosion in severe environment
- ◎ Receptacle for control cable connect
- ◎ Manual trip handle
- ◎ Name plate attach

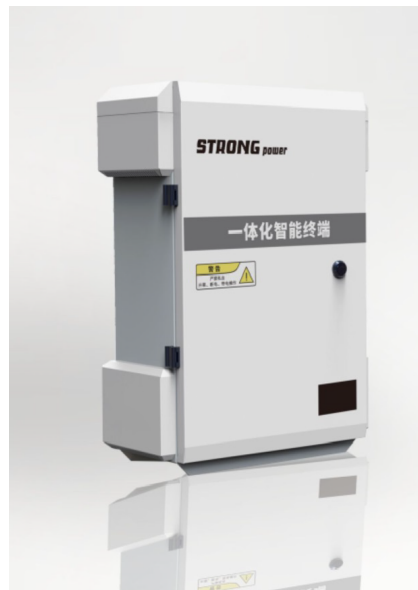
Control Cabinet

- ◎ Protective functions
- ◎ Remote communications & I/O ports
- ◎ Metering
- ◎ Event Recording
- ◎ Microprocess digital fault relay



inside of control cabinet

- 1 : PMA control module
- 2 : Control capacitor
- 3 : Power supply and battery module
- 4 : Analog input module
- 5 : Heater and AC power input module
- 6 : Battery



Recloser Ratings

N	Item	Unit	Data			
1	Rated maximum voltage	kV	15	27	38	
2	Rated maximum current	A	400/630/800/1250			
3	Rated frequency	Hz	50/60			
4	Rated short circuit breaking current	kA	12.5/16/20/25*			
5	Rated peak value withstand current	kA	31.5/40/50/63*			
6	Rated 1min power frequency withstand voltage (Dry/Wet)	kV	E	28/36	60	70
			F	36/50	65	85
			G	45/55	70	90
7	Rated lightning impulse voltage	kV	E	95	125	170
			F	110	140	185
			G	120	150	195
8	Operation sequence	s	N	C-0.3-CO-180-CO		
			M	C-0.5-CO-2-CO-5-CO		
9	Mechanical life	n	N	10000		
			M	30000		
10	Power supply and operating voltage	V	110/220, Customized			

Recloser Ratings

N	Item	Unit		Data
11	Ratio of current transformer	A		400/1, Customized
12	Number of voltage sensors	n	E	≤3
			F	≤6
13	Opening time	ms	N	≤50
			M	≤30
14	Closing time	ms	N	≤60
			M	≤40
15	Minimum creepage distance	mm/kV		31, Level 4
16	Minimum distance between phases	mm		360 380 435
17	Potential transformer	V		110/220, Customized
18	Cable length	m		6, 8, 12, Customized
19	Cable clamp		E	2-hole NEMA
			F	4-hole NEMA
20	Lightning arrester	n		≤6
21	Mounting type	Single / double column		

Recloser Ratings

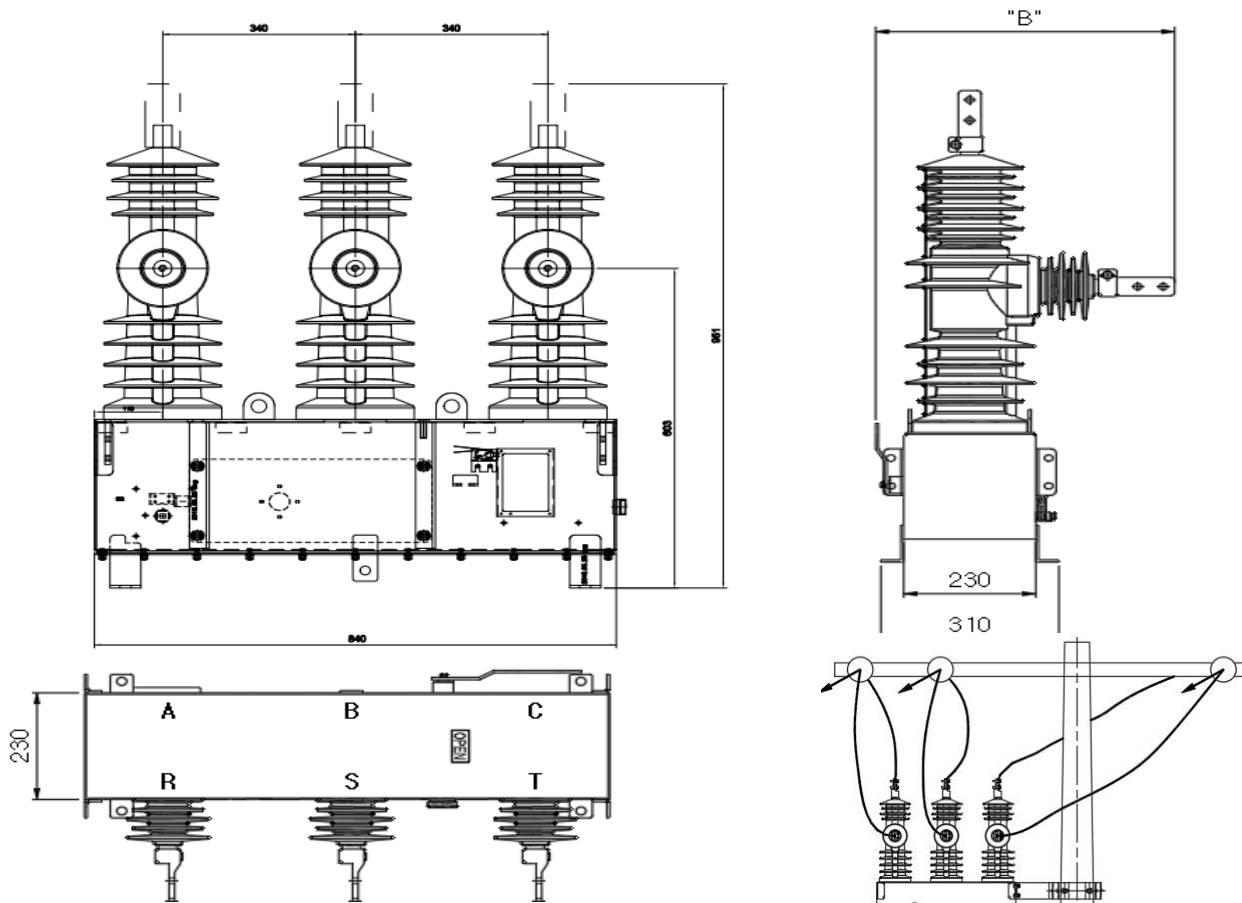
Service condition

Ambient temperature	-45 to 70	°C
Humidity	0 to 100	%
Altitude meters	3000	M

Reclosing

Reclose interval st 1	0.3 ~ 180s (step 0.1)
Reclose interval nd 2	1 ~ 180s (step 1)
Reclose interval rd 3	1 ~ 180s (step 1)
Reclose interval th 4	1 ~ 180s (step 1)
Reset time	1 ~ 180s (step 1)

Dimension



Dimensions (mm)					Installation size (mm)	
Voltage level	A	B	C	E	D(lengt h)	F(width)
12kV	340	720	980	700	920	160
15kV	340	720	980	700	920	160
24KV	380	830	1060	700	1000	160
27KV	380	830	1060	700	1000	160
38kV	380	830	1060	700	1000	160